

MISCELLANEOUS ORTHOPEDIC



The miscellaneous orthopedic category includes a wide range of specialized instruments that support various surgical tasks not covered under standard classifications. These tools are designed to assist in handling, positioning, and procedural efficiency across different orthopedic techniques. Each instrument is crafted with the same commitment to quality, precision, and durability, ensuring reliable performance in every surgical setting.

LEAD HANDS

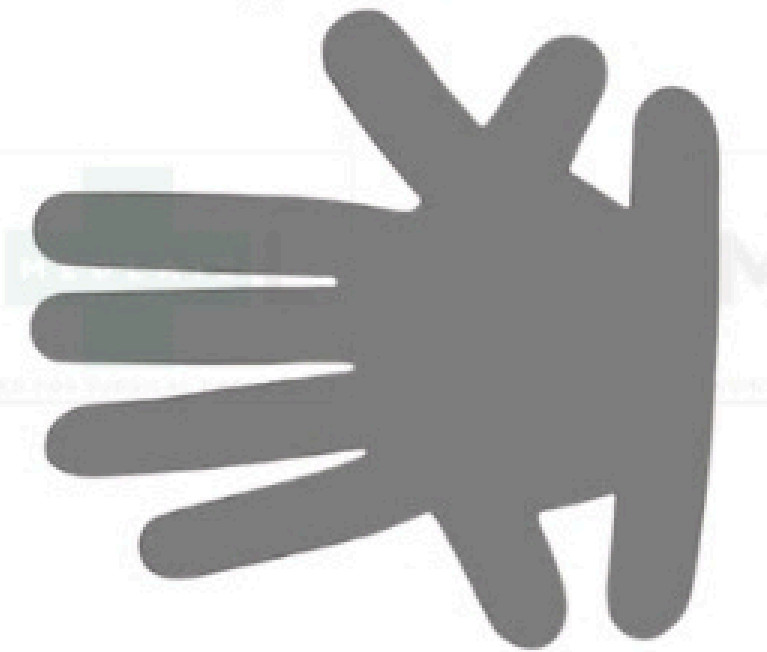
Oxidation of lead surfaces is a normal process. To prolong the life of lead hands, autoclave temperatures should not exceed 248° F (120° C). Avoid using chemical sterilization as it can cause severe corrosion.



CODE #	DESCRIPTION
ML49090	Adult, 14-1/2" (37 cm)
ML49092	Child, 9-1/2" (24 cm)

LEAD HANDS

Thinner and more flexible model. Longer fingers wrap on ends, eliminating side tabs.



CODE #	DESCRIPTION
ML49093	Adult, 2 mm thick, 9-1/2" (24 cm)

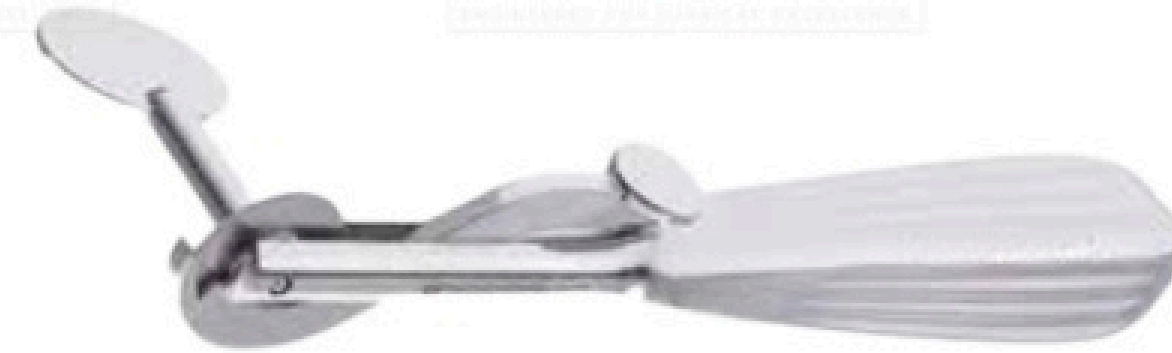
TAYLOR PERCUSSION HAMMER



CODE #	DESCRIPTION
ML28468	8" (20.5 cm)

RING CUTTERS

FINGER RING CUTTER

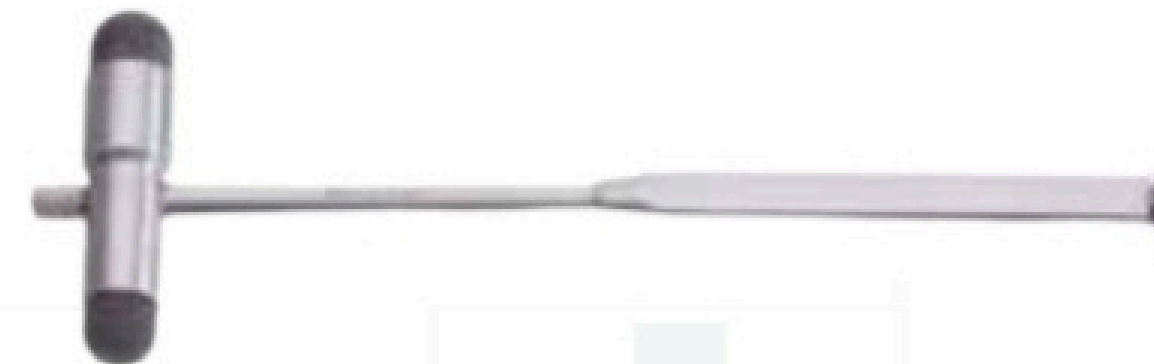


CODE #	DESCRIPTION
ML29430	Chrome, with saw blade, 6-1/4" (16 cm)
ML29434	Saw blade only

DIAGNOSTIC INSTRUMENTS

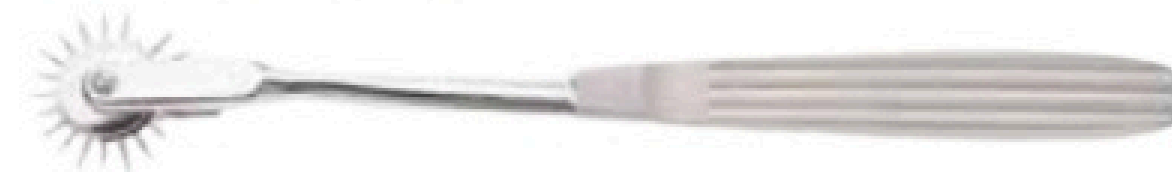
BUCK NEURO HAMMER STAINLESS

Stainless steel with brush and needle



CODE #	DESCRIPTION
ML28492	7-3/4" (19.5 cm)

WARTENBERG NEUROLOGICAL PIN WHEEL



CODE #	DESCRIPTION
ML28514	7" (18 cm)

SPECIALTY HAND INSTRUMENTS

JOHNSON-TUCKER HOOK AND FORK



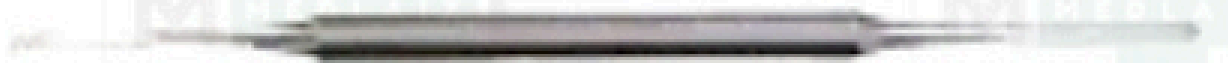
CODE #	DESCRIPTION
ML69790	Double-ended, delicate, 6-1/2" (16.5 cm)

PROBE AND PACKER



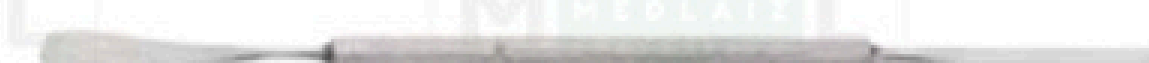
CODE #	DESCRIPTION
ML69495	Double-ended, 1 mm and 2 mm ends, 6" (15 cm)

EXCAVATOR AND PACKER



CODE #	DESCRIPTION
ML69502	Double-ended

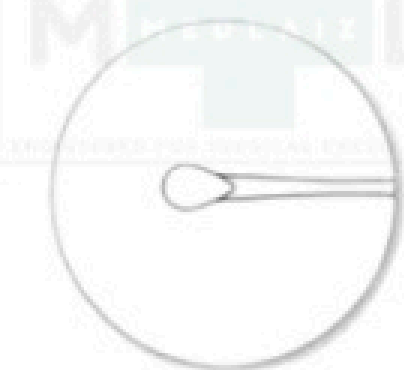
SPATULA AND PACKER



CODE #	DESCRIPTION
ML69498	Double-ended, 5-3/4" (14.5 cm)

CORN KNIVES

Single-ended.



CODE #	DESCRIPTION
ML69622	Soft Corn Knife, #45, straight, round blade
ML69623	Soft Corn Spoon Knife, slightly curved, oval blade
ML69625	Corn Knife, curved

VERUCCA CURETTE EXCAVATOR

With McGlamry Bullneck. Will resist bending



CODE #	DESCRIPTION
ML69457	Single-ended, straight, 4 mm without hole, 5" (12.5 cm)

WRIST TENDON APPROXIMATOR

CODE #	DESCRIPTION
ML52450	

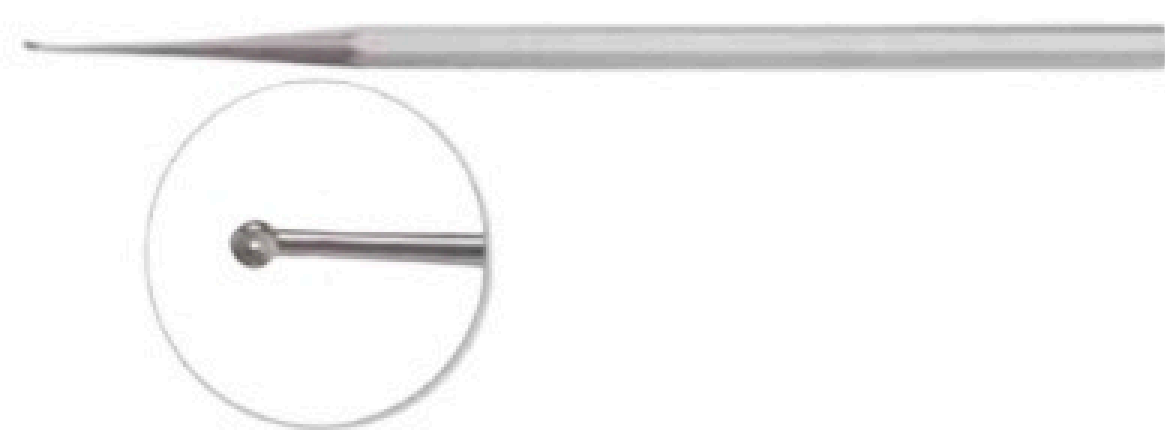
CURETTE EXCAVATORS



CODE #	DESCRIPTION
ML69488	Double-ended, 1.5 mm and 2.0 mm ends, 5-1/2" (14 cm)
ML69492	Double-ended, 1.5 mm and 2.5 mm ends, 5-1/2" (14 cm)

CURETTE EXCAVATORS

Single-ended, with hole, 5" (12.5 cm).



CODE #	DESCRIPTION
ML69468	#58, 1.0 mm
ML69478	#58, 1.5 mm
ML69480	#58, 2.0 mm
ML69484	#58, 2.5 mm

CURETTE EXCAVATORS

Single-ended, without hole, 5" (12.5 cm)



CODE #	DESCRIPTION
ML69459	#57, 1.0 mm
ML69461	#57, 1.5 mm
ML69463	#57, 2.0 mm
ML69465	#57, 2.5 mm

LOCKE ELEVATORS

With McGlamry Bullneck. Will resist bending



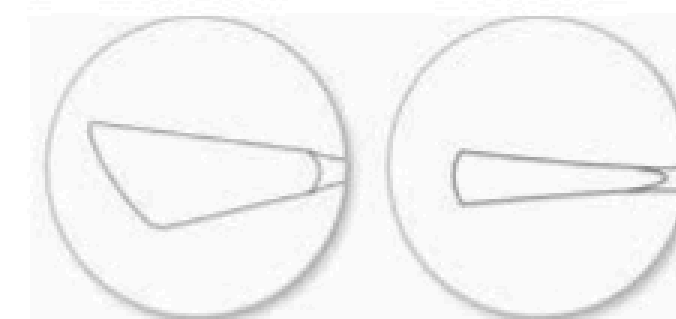
CODE #	DESCRIPTION
	Narrow blade, single-ended, 4-1/2" (11.5 cm)
	Wide blade, single-ended, 5" (12.5 cm)

GOLF STICK KNIVES



CODE #	DESCRIPTION
ML69618	#41
ML69620	#43

CHISELS



CODE #	DESCRIPTION
ML69640	Curved, medium
ML69645	Curved, extra-large
ML69650	Curved, spade pattern

MISCELLANEOUS ORTHOPEDIC PELVIC BALL SPIKE



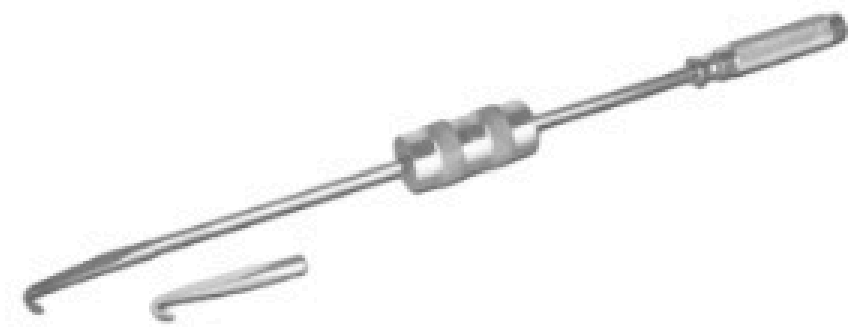
CODE #	DESCRIPTION
	Straight, 11-3/4" (30 cm)
ML47921	Spiked disk only

KUNTSCHER SKIN PROTECTOR



CODE #	DESCRIPTION
ML48297	6-1/8" (15.5 cm)

KUNTSCHER EXTRACTORS



CODE #	DESCRIPTION
ML48288	Femoral, 19-1/8" (48.5 cm)

BONE MILL



CODE #	DESCRIPTION
ML1011	With crank and table clamp

KUNTSCHER REAMER



CODE #	DESCRIPTION
ML48301	Cannulated, 15" (38 cm)