

# PLIERS

Our orthopedic pliers are crafted for precision handling of wires, pins, and rods during surgical procedures. Built from high-quality surgical stainless steel, they provide strong grip, smooth movement, and reliable control. Each design is tailored for specific tasks such as bending, twisting, or holding, ensuring optimal performance and comfort in the operating room.



# PLIERS

## NARROW NOSE WIRE PULLING FORCEPS

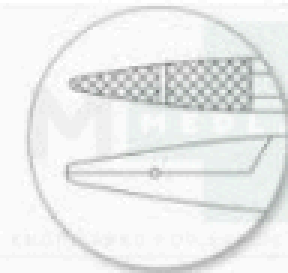
Extra heavy jaws for pulling K-Wires and Steinmann Pins. An economical alternative to double action pliers. Jaw tapers to 3 mm.



CODE #	DESCRIPTION
ML48253	3 mm tip, 7-1/2" (19 cm)

## NEEDLE NOSE PLIERS

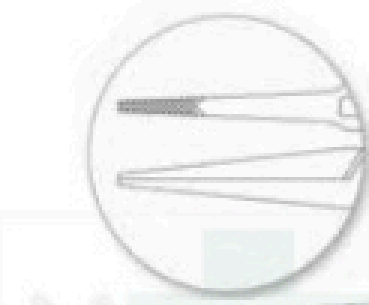
Delicate needle nose jaws specifically designed to handle cerclage wire. Jaw tapers to 1 mm



CODE #	DESCRIPTION
ML48242	Delicate, 5-3/8" (13.5 cm)

## FLAT NOSE PLIERS

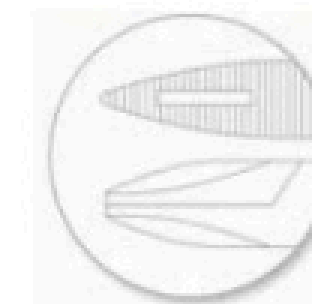
Delicate jaws taper to 2 mm. Made to twist and bend cerclage wire.



CODE #	DESCRIPTION
ML48248	Delicate, 2 mm tip, 6" (15 cm)

## NEEDLE NOSE PLIERS

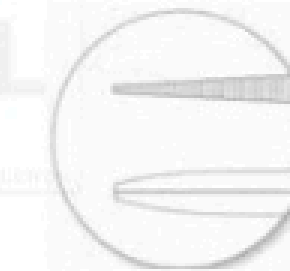
Jaw tapers to 2 mm, making it easier to get close to the bone to remove K-Wires.



CODE #	DESCRIPTION
ML48245	5-3/8" (13.5 cm)

## LONG JAW NEEDLE NOSE PLIERS

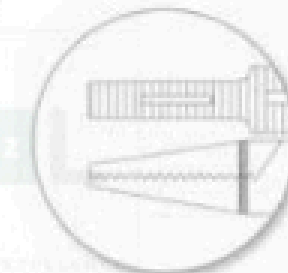
Long delicate jaws are 2 mm at the tip. Perfect for pulling K-Wires, especially in hard-to-reach sites.



CODE #	DESCRIPTION
ML48250	Parallel grooved 2" (50 mm) long jaws, 1.5 mm tip, 7" (18 cm)

## FLAT NOSE PLIERS

For wire manipulation.



CODE #	DESCRIPTION
ML48246	Broad, 4 mm tip, 5-3/8" (13.5 cm)

## FLAT NOSE PLIERS

Combination plier and cutter. Cuts all sizes (0.2 mm to 1.5 mm) of cerclage wire. Jaws taper to 3.5 mm.



CODE #	DESCRIPTION
ML48243	6-1/2" (16.5 cm)

## PIN PULLING PLIERS

Tungsten carbide inserts and grooved opposing jaw design grips small pins securely. Small size is well suited for hand procedures. Jaws are 3 mm at tip.



CODE #	DESCRIPTION
ML46578	5-1/2" (14 cm), TC

## SCREW REMOVAL FORCEPS

Useful for removing 3.0 mm to 4.5 mm screws.



CODE #	DESCRIPTION
ML49920	7" (18 cm), with speed lock, TC

## WIRE BENDING PLIERS



CODE #	DESCRIPTION
ML48269	5-7/8" (15 cm)

## K-WIRE EXTRACTION PLIERS

With screw lock.



CODE #	DESCRIPTION
ML48257	3 mm tip, 5" (13 cm)
ML48258	4 mm tip, 7" (18 cm)

## SLIP JOINT PLIERS

Traditional design utility pliers with adjustable jaws. Good all-purpose plier for handling Steinmann Pins, K-Wires, screws and rods. 10 mm jaw tip.



CODE #	DESCRIPTION
ML48262	Maximum opening 2" (5 cm), 8" (20.5 cm)

## FLAT NOSE K-WIRE PLIERS

Multi-purpose plier with flat jaws that taper to 6 mm for pulling K-Wire.



CODE #	DESCRIPTION
ML48254	6 mm tip, with side groove for cerclage wire, 6-3/4" (17 cm)
ML48256	6 mm tip, 6-3/4" (17 cm)

## PARALLEL PLIERS

Parallel grooved 10 mm jaws provide enormous gripping power. Ideal for pin removal.



CODE #	DESCRIPTION
ML48604	Maximum opening 1/2", 7-1/4" (18.5 cm)

## PARALLEL PLIERS WITH CUTTER

Combination pliers and wire cutter has all the benefits of our Parallel Pliers plus a cutting jaw for K-Wires up to 0.062" (1.6 mm).



CODE #	DESCRIPTION
ML48605	Maximum capacity .062" (1.6 mm), 7" (18 cm)

## DOUBLE ACTION WIRE EXTRACTION PLIERS

- Recommended for heavy use. Double action and finely serrated carbide tips combine to provide a powerful grip on K-Wires and pins
- .2 mm tip is ideal for removing K-Wire up to 0.62 mm from small, hard-to-reach sites.
- 4 mm and 6 mm jaws are ideal for grasping and pulling all sizes of K-Wires and pins.
- 7-1/4" (18.5 cm).



CODE #	DESCRIPTION
ML46572	2 mm delicate jaw, TC
ML46573	4 mm jaw, TC
ML46574	6 mm jaw, TC

## LINEMAN PLIERS

Combination pliers and K-Wire Cutter. An economical general purpose instrument with cutting edge.



CODE #	DESCRIPTION
ML48259	Side cutting, maximum capacity .062" (1.6 mm), 8-1/2" (21.5 cm)

# LOCKING PLIERS

## HEAVY DUTY LOCKING PLIERS

- With a new, reinforced, more durable jaw.
- Heavy duty jaws lock securely onto pins.
- Made from 300 and 400 series surgical grade stainless steel.
- Will not chip or contaminate other instrumentation.
- Adjustment screw for easy control of jaw opening.
- One-handed, quick release self-locking lever
- Available in three sizes.



CODE #	DESCRIPTION
ML48600	Small, 7 mm wide tip, maximum opening 1" (25 mm), 6-3/4" (17 cm)
ML48602	Medium, 9 mm wide tip, maximum opening 1" (25 mm), 8" (20.5 cm) ML48608 Large, 13 mm wide tip, m
ML48608	Large, 13 mm wide tip, maximum opening 1-1/2" (38 mm), 10" (25.5 cm)

## NEEDLE NOSE LOCKING PLIERS

With a new reinforced, more durable jaw. New 12" model has an impressive, powerful jaw. The body is made from 2.5 mm stainless steel. This plier will hold up better in the OR than any other needle nose plier – we guarantee it! Both pliers have a more durable, reinforced jaw hinge and housing which helps keep the ends in alignment, especially when the plier is twisted. Other features: one tapered "V" grooved jaw which locks securely onto pins; adjustment screw; and one-handed, quick release self-locking lever. Pliers are made from 300 and 400 series surgical grade stainless steel. Unlike "hardware store" quality, they will not chip or contaminate other instrumentation.

CODE #	DESCRIPTION
ML48606	9-1/2" (24 cm)
ML48610	Large, 12" (30.5 cm)



# LOCKING PLIERS WITH SLAPHAMMERS

A powerful combination of locked gripping strength and controlled hammer action.

- These stainless steel heavy duty locking pliers with slaphammers enable surgeons to more easily extract prostheses, intramedullary nails and hip fracture plates.
- The large pliers offer maximum versatility – slaphammers can be attached in three places; on the end or on either side. Small and medium pliers have end attachments only.
- If additional force is required, a mallet may be used on the hammer plate.

CODE #	DESCRIPTION
ML48614	Medium, end attachment only, 8" (20.5 cm)
ML48616	Large, end and side attachments, 10" (25.5 cm)
ML48620	Needle Nose Locking Pliers, medium, end attachment only, 9-1/2" (24 cm)
ML48622	Needle Nose Locking Pliers, large, end and side attachments, 12" (30.5 cm)



# PLATE BENDING PLIERS

## BENDING PLIERS

For 1.5 mm and 2.0 mm plates.



CODE #	DESCRIPTION
ML47931	5-3/4" (14.5 cm)

## SMALL PLATE BENDING PLIERS

For 2.7 mm and 3.5 mm plates.



CODE #	DESCRIPTION
ML47925	7-5/8" (19.5 cm)

## PLATE BENDING PLIERS

For reconstruction plates.



CODE #	DESCRIPTION
ML47927	9-3/8" (23.5 cm)

## PLATE BENDING PRESS



CODE #	DESCRIPTION
ML47929	13-3/4" (35 cm)

## MINI PLATE BENDING PLIERS

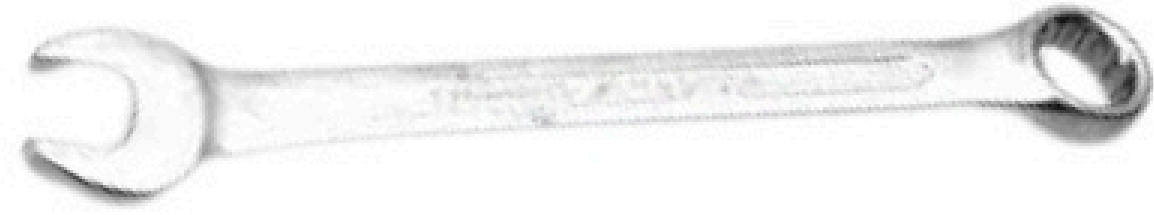
For 1.5 mm and 2.0 mm plates



CODE #	DESCRIPTION
ML48244	For 1.5 mm and 2.0 mm plates

# SOCKET WRENCHES

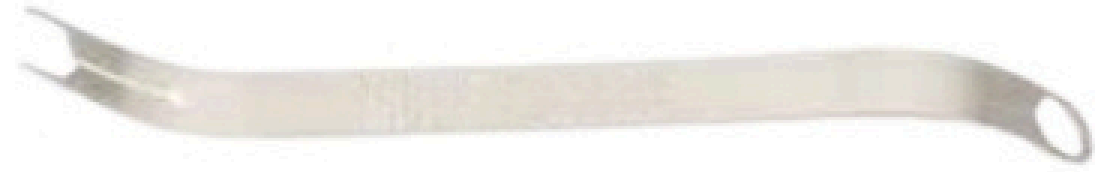
## COMBINATION WRENCH



CODE #	DESCRIPTION
ML45412	11 mm, 5-1/2" (14 cm)

## WRENCH

For tightening 8 mm nuts



CODE #	DESCRIPTION
ML47914	5-7/8" (15 cm)

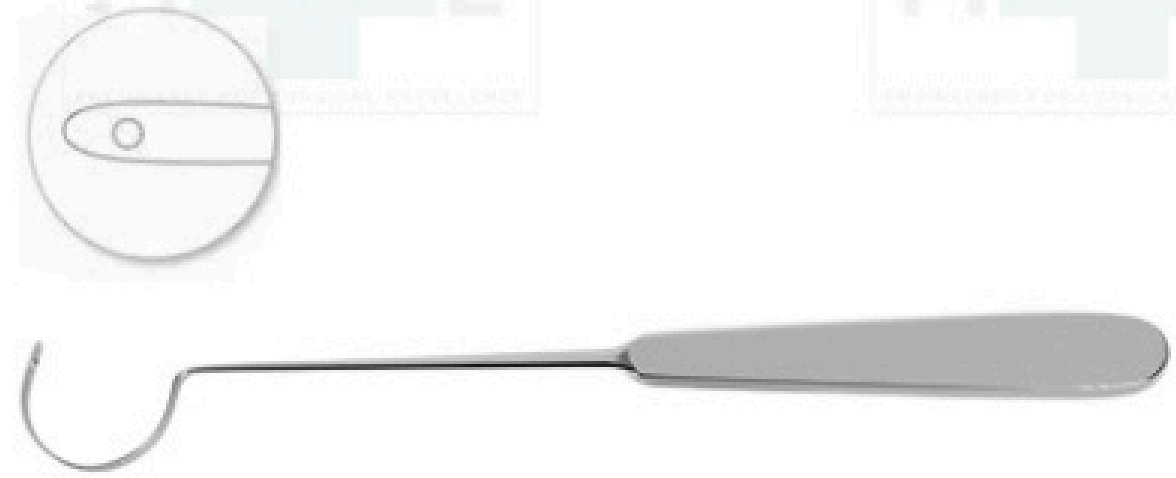
## SOCKET WRENCH



CODE #	DESCRIPTION
ML45410	11 mm, 7-3/4" (20 cm)
ML47912	Chrome vanadium, 11 mm, 6-3/4" (17 cm)

# WIRE GUIDES AND TRACTION BOWS

## DEMEL WIRE GUIDES



CODE #	DESCRIPTION
ML48380	30 mm diameter, 10-1/2" (26.5 cm)
ML48382	47 mm diameter, 11-1/2" (29 cm)
ML48384	57 mm diameter, 12-1/2" (32 cm)

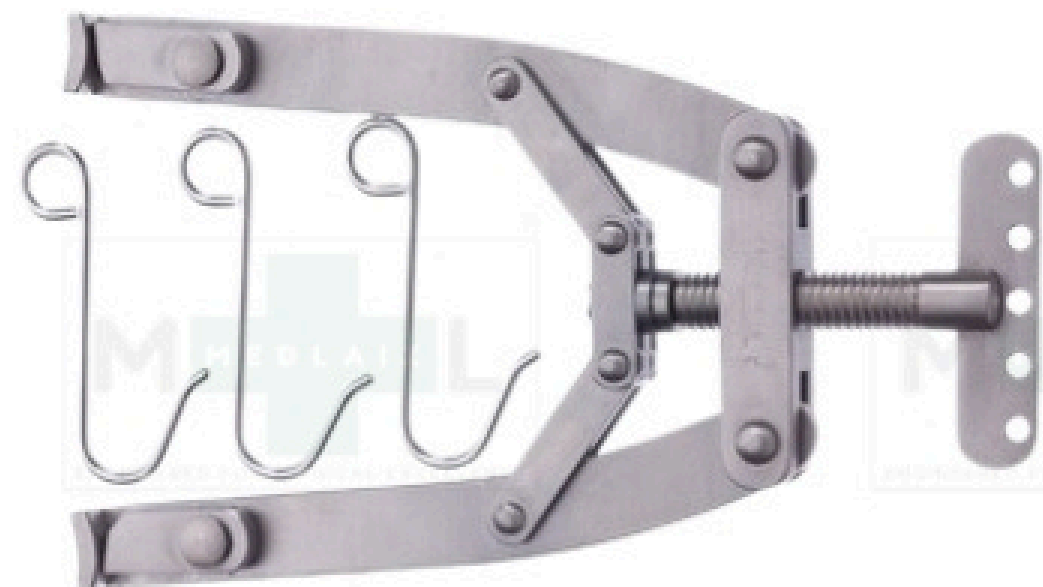
## WIRE AND PIN TRACTOR (BOEHLER)

Each Wire and Pin Tractor comes with a pack of 6 trocar round-end Steinmann Pins as listed.



## KIRSCHNER BOWS

Each Kirschner Bow comes with three hooks.



CODE #	DESCRIPTION
ML48270	Small, 5-3/4" (14.5 cm)
ML48272	Large, 7-1/2" (19 cm)
ML48274	Extra large, 9-5/8" (24.5 cm)

CODE #	SIZE	INSIDE LENGTH	INSIDE WIDTH	PIN SIZE AND DIAMETER
ML48326	small	90mm	75mm	5" 2.4 mm
ML48328	medium	160mm	90mm	7" 3.2 mm
ML48330	Large	210mm	150mm	9" 4.0 mm

# LIGATURE CARRIERS AND WIRE PASSERS

## WIRE PASSERS (CANNULATED)

Cannulation allows for easy feeding of wire around the bone



CODE #	DESCRIPTION
ML48386	45 mm diameter, 7" (18 cm)
ML48388	70 mm diameter, 9-1/2" (24 cm)

## SUTURE PASSERS

Used to pass sutures in shoulder surgery. Curved, 9-1/4" (23.5 cm).



CODE #	DESCRIPTION
ML46917	With crochet hook
ML46918	With suture hole

Autoclavable to 290°F (143°C)

