



Our orthopedic screwdrivers are designed for precise control and secure handling of all standard implant screws. With ergonomic handles and torque-optimized shafts, they allow for accurate insertion and removal without stripping or slippage. Available in a variety of tip designs and sizes, each screwdriver ensures compatibility with a wide range of orthopedic systems.

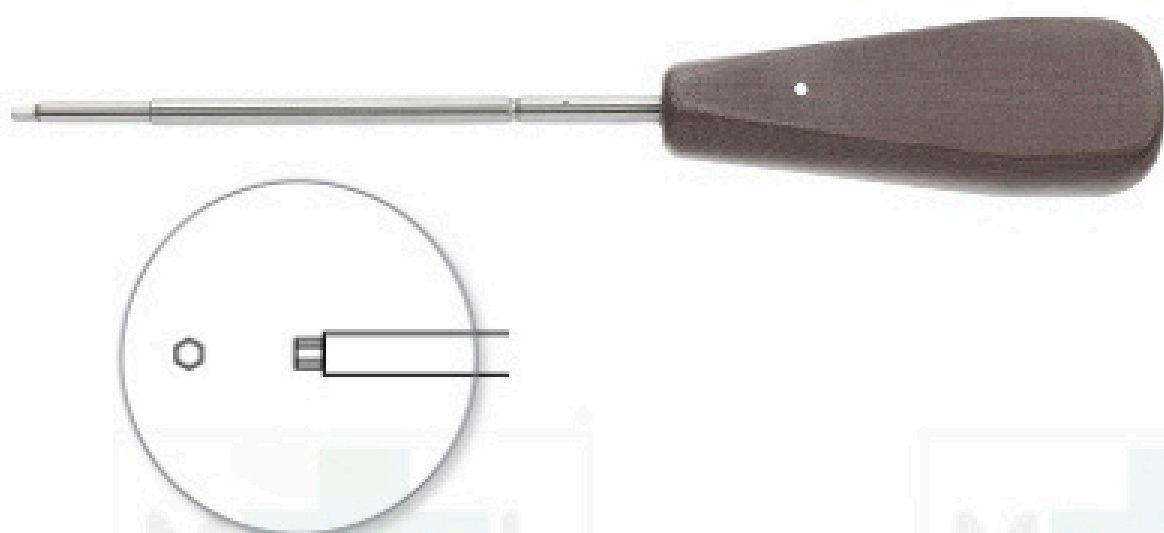
SCREWDRIVERS

HEX HEAD HEXAGONAL SCREWDRIVERS



CODE #	DESCRIPTION
ML47952	2.5 mm screwdriver with sleeve, 7-7/8" (20 cm)
ML48368	2.5 mm screwdriver with notch, 8-1/4" (21 cm)
ML48349	3.5 mm screwdriver with notch, 9-5/8" (24.5 cm)
ML47955	Screw holding sleeve only for ML47952, 2" (5 cm)
ML48365	Screw holding sleeve only for ML48368, 3" (8 cm)
ML47983	Screw holding sleeve only for ML48349, 5" (12.5 cm)
ML47956	Screwdriver only for ML47952

LARGE HEXAGONAL SCREWDRIVER (PELVIC)



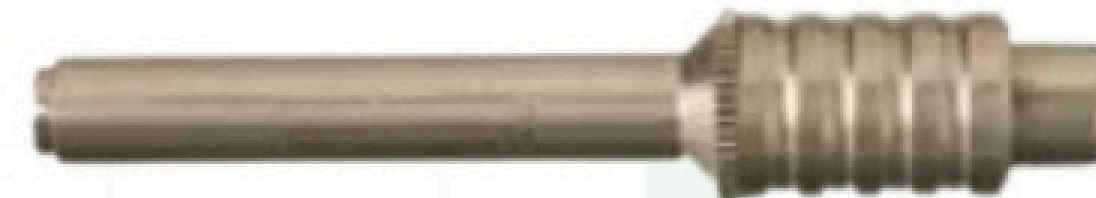
CODE #	DESCRIPTION
ML48353	3.5 mm screwdriver with notch, 11-3/4" (30 cm)
ML48364	Screwdriver only, 2.5 mm with notch, 11" (27 cm)
ML47983	Sleeve only for ML48353, 5" (12.5 cm)

HEXAGONAL SCREWDRIVER SHAFT (PELVIC)



CODE #	DESCRIPTION
ML47951	2.5 mm with notch, quick coupling end, 6-1/2" (16.5 cm)
ML47953	2.5 mm without notch, quick coupling end, 4" (10 cm)
ML47961	3.5 mm with notch, quick coupling end, 6-1/2" (16.5 cm)
ML48365	Sleeve only for ML47951, 3" (8 cm)
ML47983	Sleeve only for ML47961, 5" (12.5 cm)

SCREWDRIVER SLEEVES



CODE #	DESCRIPTION
ML48365	Sleeve only for ML47951, ML48348, ML48364, ML48368, 3" (8 cm)
ML47983	Sleeve only for ML48349, ML48353 and ML47961, 5" (12.5 cm)

LARGE HEXAGONAL SCREWDRIVER



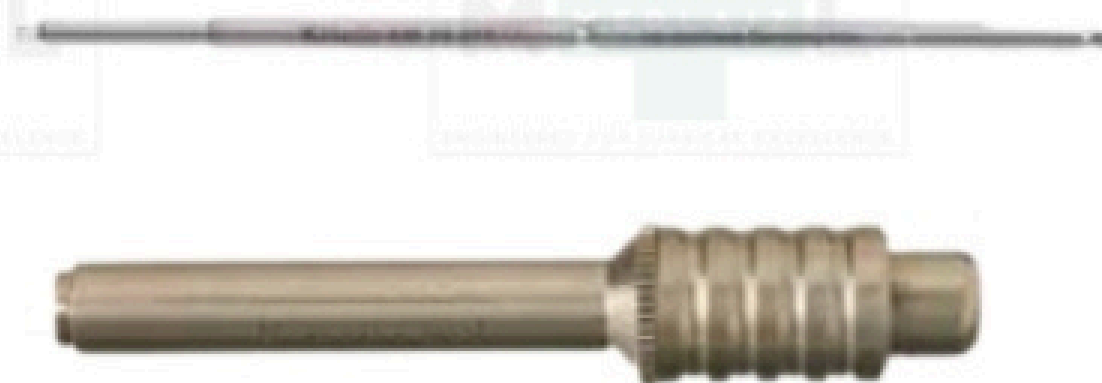
CODE #	DESCRIPTION
ML48252 3	3.5 mm, quick coupling end, 3-7/8" (10 cm)

LARGE HEX SCREWDRIVER WITH UNIVERSAL JOINT



CODE #	DESCRIPTION
ML48396	3.5 mm tip, 11-5/8" (29.5 cm)

HEXAGONAL SCREWDRIVER SHAFT



CODE #	DESCRIPTION
ML48348	2.5 mm with notch, quick coupling end, 5-1/2" (14 cm)
ML48365	Sleeve only

LARGE HEXAGONAL SCREWDRIVER



CODE #	DESCRIPTION
ML47954	3.5 mm, quick coupling end, 3-7/8" (10 cm)

SCREWDRIVER



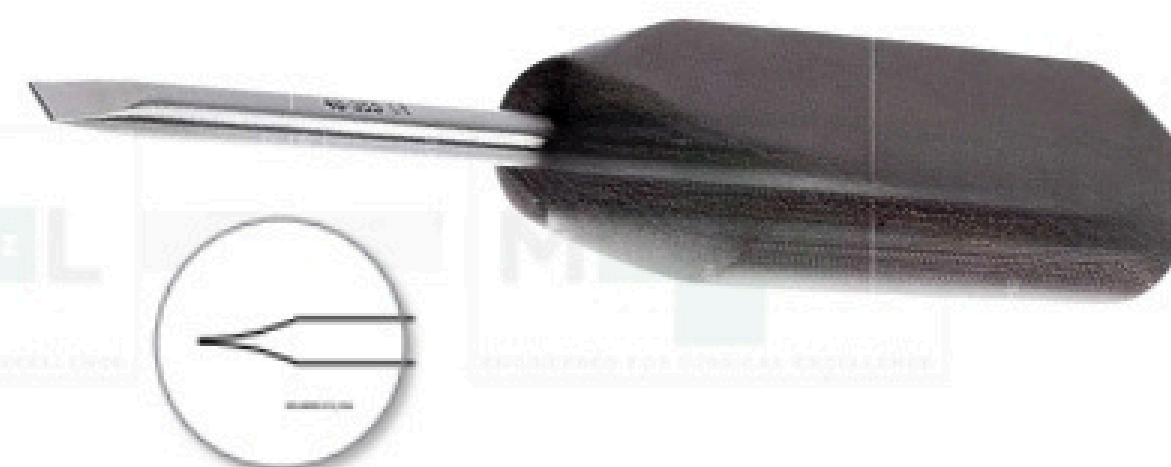
CODE #	DESCRIPTION
ML48670	1.5 mm hexagonal, 7-7/16" (200 mm)
ML48350	2.5 mm hexagonal, 9-27/32" (250 mm)
ML48352	3.5 mm hexagonal, 9-27/32" (250 mm)
ML48354	Single slot, 9-27/32" (250 mm)
ML48356	Cruciform, 9-27/32" (250 mm)
ML48358	Phillips, 9-27/32" (250 mm)

MINI HEXAGONAL SCREWDRIVER



CODE #	DESCRIPTION
ML47950	1.5 mm, mini quick coupling end, sleeve included, 2-1/4" (5.5 cm)
ML47950B	Shaft only, 1.5 mm with notch, mini quick coupling end, 2" (5 cm)
ML47959	Screw holding sleeve only

SINGLE SLOT SCREWDRIVER



CODE #	DESCRIPTION
ML48355	Phenolic handle, 6-3/4" (17 cm)

CRUCIFORM HEAD CRUCIFORM SCREWDRIVER



CODE #	DESCRIPTION
ML47957	1.5 / 2.0 mm screwdriver with sleeve, 7-1/2" (19 cm)
ML47959	Screw holding sleeve only for ML47957
ML47958	Screwdriver only for ML47957

MINI CRUCIFORM SCREWDRIVER BIT



CODE #	DESCRIPTION
ML45004	1.5 / 2 mm, mini quick coupling end, 2-1/2" (6.5 cm)

T-HANDLE LARGE HEX SCREWDRIVER W/ T-HANDLE

CODE #	DESCRIPTION
ML48395	3.5 mm, quick coupling end, 6-7/8" (17.5 cm)

DEPTH GAUGE SCREW DEPTH GAUGES

Used to determine screw length required during internal fracture fixation (mm graduated). Snaps apart for easy cleaning. IMPORTANT NOTE: When not in use, retract measuring end inside gauge for probe protection



CODE #	DESCRIPTION
ML47934	Mini, up to 30 mm, 4-3/4" (12 cm)
ML47936	Small, up to 50 mm, 6-1/4" (16 cm)
ML47940	Large, up to 100 mm, 8-3/4" (22 cm)
ML47935	Extra-long, up to 120 mm, 11" (28 cm)

INTERCHANGEABLE SCREWDRIVER SET

Screwdriver Sets



CODE #	DESCRIPTION
ML48473	Screwdriver handle. Allows K-Wire and pins to be inserted with Jacobs Universal Chuck ML48478. Cannulation 1/4" (6.3 mm), includes key, 5-1/2" (14 cm)
ML48474	Single slot, 5-1/2" (14 cm)
ML48475	Cruciform, 5-1/2" (14 cm)
ML48476	Phillips, 5-1/2" (14 cm)
ML48477	Small Phillips, 5-1/2" (14 cm)
ML48478	Jacobs Universal Chuck. Allows K-Wire and pins to be inserted with Jacobs Chuck. Cannulation 1/4" (6.3 mm), includes key, 3" (7.5 cm)
ML48478P	Key for ML48478 Jacobs Universal Chuck
ML48479	3.5 mm diameter, 5-1/2" (14 cm)
ML48480	2.5 mm diameter, 5-1/2" (14 cm)

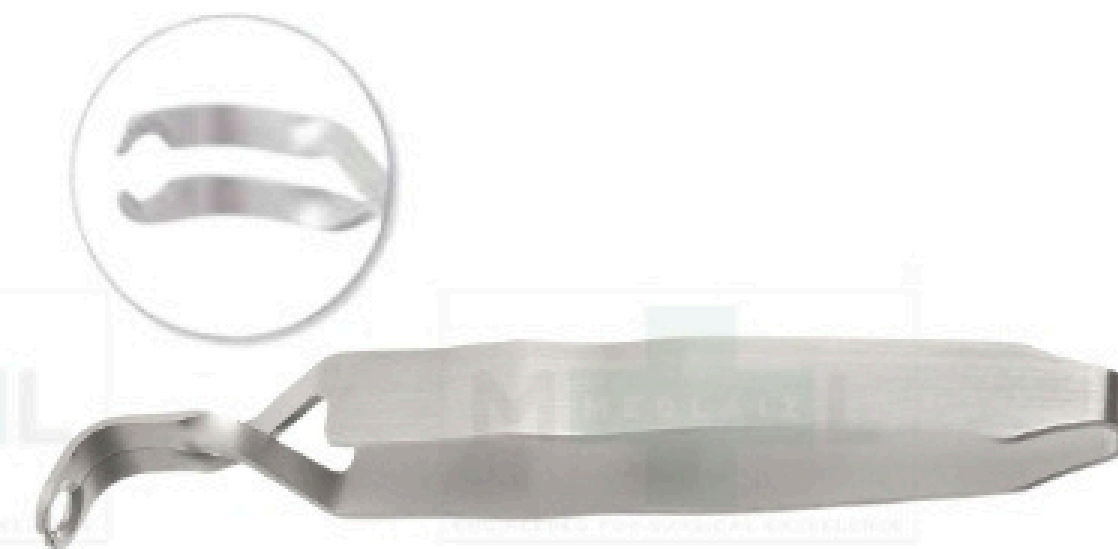
SCREW HOLDING FORCEPS

SELF-RETAINING SCREW HOLDING FORCEPS



CODE #	DESCRIPTION
ML47930	3-1/2" (9 cm)

SELF-RETAINING SCREW HOLDING FORCEPS



CODE #	DESCRIPTION
ML45208	For 1.5 mm to 2.7 mm screws
ML45210	For 3.5 mm to 6.5 mm screws